

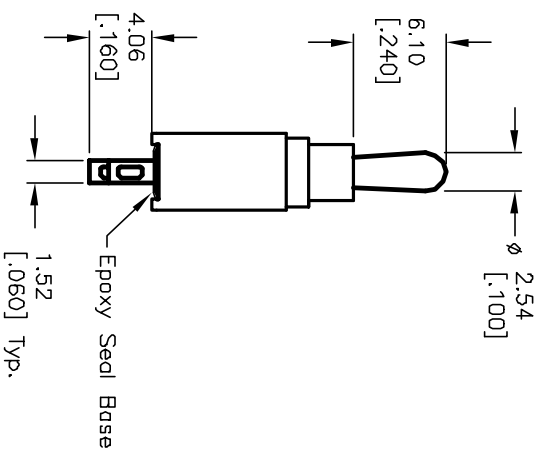
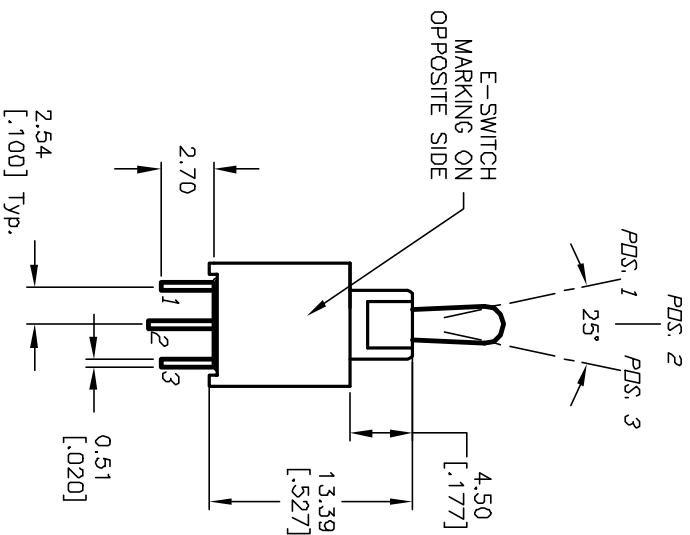
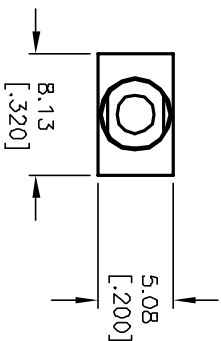
CIRCUIT: SPDT
CONTACT CONFIGURATION

SWITCH FUNCTION		
PDS. 1	PDS. 2	PDS. 3
<CND>	DPEN	<CND>
2-3	2-1	

() = MOMENTARY

NOTES:

1. ALL DIMENSIONS IN MM [INCH]
2. GENERAL TOLERANCE: X.XX=±0.4
X.XXX=±0.25
3. TERMINAL NUMBERS FOR REF ONLY
4. RATING: 3A @120VAC or 28VDC;
1A @250VAC.
5. FIXED TERM. & MOVING CONTACT:
Copper ALLOY W/Silver plating
6. ELECTRIC LIFE: 50,000 make-and-break cycles
at full load.
7. INSULATION RESISTANCE: 1,000 Mega-ohm min.
8. DIELECTRIC STRENGTH: 1,000 V RMS @sea level.
9. OPERATING TEMP.: -30°C to +85°C



E-SWITCH®

REV.	ECN NO.	DESCRIPTION	DATE	CHK'D
A	12641	RELEASED FOR PRODUCTION	12/20/02	CB

TITLE	SCALE	DATE	DR	DWG	REV
2004 WMSP-4 T2 A1 M1 Q E	2:1	12/20/02	CB	T201412	A

THE INFORMATION CONTAINED IN THIS DOCUMENT IS PROPRIETARY TO E-SWITCH AND IS NOT TO BE COPIED OR TRANSMITTED